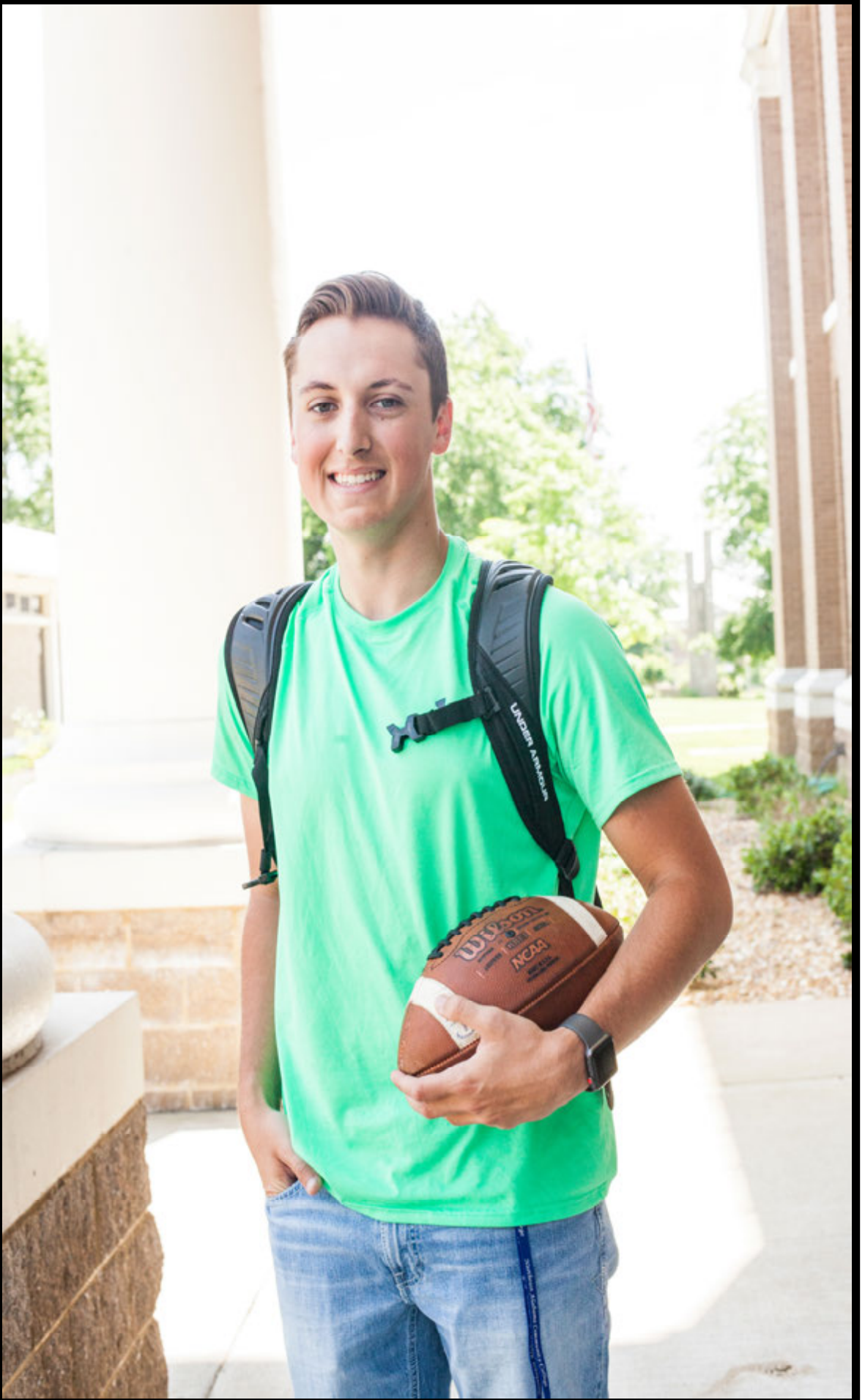


S  
T  
U  
D  
E  
N  
T  
  
H  
A  
N  
D  
B  
O  
O  
K



## FACULTY & STAFF DIRECTORY

Instructor	Phone	E-mail	Office	Title
Adams-Hughes, Deanna		adamsd@nacc.edu		Adjunct Instructor of Political Science
Adkins, Deni	2277	adkinsd@nacc.edu	MT 221	Engineering Technology/Technician Instructor
Adkins, Jeff		adkinsj@nacc.edu		Adjunct Instructor of Mathematics
Adkins, Dr. Melinda		adkinsm@nacc.edu		Adjunct Psychology Instructor
Allison, Kim		allisonk@nacc.edu		Adjunct Instructor Nursing Assisting Technology
Anderson, Chris	2264	canderson@atn.org	WD 125	ATN Project Engineer
Archer, Brad	2232	archerb@nacc.edu	LY 108	Technical Theatre Director/Instructor of Theatre
Bain, Angie	2207	baina@nacc.edu	SC 103	Office Assistant (Reverse Transfer)
Barksdale, Tim		barksdalet@nacc.edu		Adjunct Instructor of ILT
Barrentine, Debra	2210	barrentined@nacc.edu	PA 120	Director of Promotions & Marketing
Bell, Gerald (Buddy)		bellb@nacc.edu	HE 119	Adjunct Instructor of Medical Assisting Technology
Bellomy, Chasley	2248	bellomyc@nacc.edu	PA 204	Event Planning and Alumni Relations
Bergman, Kim		bergmank@nacc.edu		Adjunct Instructor of Biology
Berry, William		berryw@nacc.edu	MS 105	Adjunct Instructor of Geography
Black, Cindy		blackc@nacc.edu		Adjunct Instructor of History
Black, Kelly	2286	blackk@nacc.edu	WD 258	Drafting and Design Technology Instructor
Blevins, Anita		blevinsa@nacc.edu		Adjunct Instructor of Mathematics
Bloodworth, Rachel	2289	bloodworthr@nacc.edu	HE 211	Nursing Instructor
Bouldin, Devin		bouldind@nacc.edu	MT 215	Adjunct Instructor of Biology
Brasher, Dr. James	2771	brasherj@nacc.edu	MT 226	Adjunct Instructor of Physics and Mathematics
Breland, Milah	2262	brelandm@nacc.edu	MT 232	Mathematics Instructor
Brewer, Stephen	2296	brewers@nacc.edu	GY 221	GED Instructor
Brooks, Mark		brooksm@nacc.edu	EN 112	Adjunct Instructor of English
Brookshire, Harold	2287	brookshireh@nacc.edu	ANNEX 100	Adjunct Bookstore Assistant
Brown, Jennifer	2275	brownj@nacc.edu	WA 101-D	Financial Aid Assistant
Brown, Jeri		brownjeri@nacc.edu		Adjunct Instructor of English
Brown, Kevin		brownk@nacc.edu		Adjunct Instructor of Drafting and Design Technology
Bruce, Donna T.	2305	bruced@nacc.edu	HE 226	Nursing Instructor
Bunch, Leisa	2292	bunchl@nacc.edu	GY 219	ABE Office Assistant/Accountant
Byrum, Dr. Scott		byrums@nacc.edu	KX 107	Adjunct Instructor of Biology
Cain, Lauren	2298	cainl@nacc.edu	HE 223	Nursing Instructor
Camp, John	2370	campj@nacc.edu	MT 233	Mathematics Instructor
Campbell, Dr. David	2243	campbelld@nacc.edu	PA 103	President
Cantrell, Tony		cantrella@nacc.edu		Adjunct Instructor of CIS
Carroll, Barbara		carrollb@nacc.edu	ENG 120	Professional Tutor
Carter, Robert		carterr@nacc.edu	HE 119	Adjunct Instructor of Medical Assisting Technology
Chapman, Misty	2321	chapman@nacc.edu	MT 218	Biology Instructor
Clement, Julise	259-1512	clementj@nacc.edu	SI	Salon and Spa Management Instructor/Program Director
Cole, Scott		coles@nacc.edu		Adjunct Instructor of History
Colvard, Brent		colvardb@nacc.edu	MS 102	Adjunct Instructor of History
Combs, Patricia	2212	combsp@nacc.edu	PA 137	Director of Educational Technology
Cowart, Darlene	2238	cowartd@nacc.edu	PA 129-A	MIS Office Manager
Crawford, Hannah	2254	crawfordh@nacc.edu	PA 148	Administrative Assistant to Dean of Workforce Development and Skills Training
Dalton, Marilyn	2255	daltonm@nacc.edu	WD 248	Medical Assisting Technology Instructor/Program Director
Davidson, Jim		davidsonj@nacc.edu		Adjunct Instructor of Religion
Davis, David		davidsd@nacc.edu	WD 260	Adjunct Instructor of Criminal Justice
Davis, Donna	2771	davisdonna@nacc.edu	MT 226	Adjunct Instructor of Physics and Mathematics
Day, Billy	2220	dayb@nacc.edu	SS 102	History Instructor

**FACULTY & STAFF DIRECTORY**

<b>Instructor</b>	<b>Phone</b>	<b>E-mail</b>	<b>Office</b>	<b>Title</b>
Day, Rebecca	2242	dayr@nacc.edu	PA 111	Administrative Assistant to Director of Extended Day and Distance Education
DeAngelis, Hugo	2813	deangelish@nacc.edu	IS 101	Machine Tool Technology Instructor
Deere, Christie		deerec@nacc.edu	MT 229	Adjunct Instructor of Mathematics
Dixon, Tom	2341	dixont@nacc.edu	WD 247	Emergency Medical Services Instructor/Program Director
Dodd, Olivia	2399	doddo@nacc.edu	WA 121	Assistant to the Director of Institutional Planning and Assessment and SACSCOC Accreditation Liaison
Doll, Tom		dollt@nacc.edu		Adjunct Instructor of Mathematics
Dudley, Bradley	2330	dudleyb@nacc.edu	WA 121	Director of Institutional Planning and Assessment and SACSCOC Accreditation Liaison
Durham, James B.		durhamj@nacc.edu	BE 108	Adjunct Instructor of Business
Ealy, Kyle	2267	ealyk@nacc.edu	PA 129	Computer Technician
Edmondson, Tonia	2293	edmondsont@nacc.edu	GY 219	Adult Basic Education Office Manager/MIS
Edwards, Magan	2316	edwardsm@nacc.edu	HE225	Healthcare Success Coach
Emmett, William		emmettw@nacc.edu		Adjunct Instructor of Mathematics
Evanko, Dr. Liberty		evankol@nacc.edu	KX 205	Adjunct Instructor of Astronomy and Physical Science
Everett, Dr. Julia B.	2226	everettj@nacc.edu	LI 103	Head Librarian
Everett, Lauren		everettl@nacc.edu		Adjunct Instructor of Biology
Ferguson, Carrie		fergusonc@nacc.edu		Adjunct Instructor of Mathematics
Finch, Starla		finchs@nacc.edu	BE 104	Adjunct Instructor of English & History
Frasier, Doilene	2302	frasierd@nacc.edu	HE 212	Nursing Instructor
Freeman, Jada	2317	jfreeman@atn.org	WD 124	ATN Office Manager
Frost, Thomas	2263	frostt@nacc.edu	MT 231	Instructor of Mathematics
Garner, Dana	2295	garnerd@nacc.edu	LI 204	Child Development Instructor
George, Julie	2214	georgej@nacc.edu	PA 118	Skills Training Coordinator
Gifford, Pamela		giffordp@nacc.edu	EN 115	Adjunct Instructor of English
Gilbert, Alison		gilberta@nacc.edu		Adjunct Instructor of Mathematics
Gilliland, Regina	259-1512	gillilandr@nacc.edu	SI	Salon and Spa Management Instructor
Goins, Betina		goinsb@nacc.edu		Adjunct Instructor of English
Gorham, Chad	2320	gorhamchad@nacc.edu	PA 101	Interim Dean of Instruction
Goss, Renee	2326	gossr@nacc.edu	LI 105	Librarian (Part-time)
Grace, Sherie	2325	graces@nacc.edu	SC 115-A	Dean of Student Services
Gross, Gail	2287	grossg@nacc.edu	AX 100	Bookstore Manager
Guffey, Larry D.	2313	ldguffey@nacc.edu	WA 125	Dean of Administrative Services
Guffey, Linda	2219	guffeyl@nacc.edu	WA 122	Business Office Secretary
Guffey, Stacy	2327	guffeys@nacc.edu	WA 101-C	Financial Aid Office Assistant
Hamrick, Keri	2208	hamrickk@nacc.edu	SS 104	History Instructor
Hancock, Debra		hancockd@nacc.edu		Adjunct Instructor of Massage Therapy
Hancock, Susan R.	2213	hancocks@nacc.edu	WA 125	Assistant to Dean of Administrative Services/Accountant
Hart, Stacey	2331	harts@nacc.edu	HE 218	Instructor of Nursing
Harvey, Andrea	2260	harveya@nacc.edu	SC 115	Admissions Office Assistant
Hawes, Jeff	2278	hawesj@nacc.edu	EN 111	English Instructor
Hawes, Shainah		hawess@nacc.edu		Adjunct Instructor of Medical Assisting Technology
Hechler, Brian		hechlerb@nacc.edu		Adjunct Instructor of Mathematics
Henry, Brian		henryb@nacc.edu	EN 115	Adjunct Instructor of English
Hernandez, Brenda	2227	hernandezb@nacc.edu	WA 101	Financial Aid Office Assistant
Hester, Julie	2202	hesterj@nacc.edu	PA 129	Computer Science Instructor
Hill, Stephanie		hills@nacc.edu	HE 119	Adjunct Instructor of Medical Assisting Technology
Hilley, Deborah		hilleyd@nacc.edu		Adjunct Instructor Nursing Assistant Technology
Hilley, Natasha		hilleyn@nacc.edu		Adjunct Instructor of English
Holland, Cindy		hollandc@nacc.edu	EN 115	Adjunct Instructor of English

## FACULTY & STAFF DIRECTORY

Instructor	Phone	E-mail	Office	Title
Holloway, Wendy	2284	holloway@nacc.edu		
Holman, Johnny		holmanj@nacc.edu		Adjunct Instructor of History
Holt, Kevin S.	2239	holtk@nacc.edu	MT 219	Biology Instructor
Johnson, Carolyn		johnsonc@nacc.edu	EN 113	Adjunct Instructor of English
Johnson, Eric		johnsone@nacc.edu	KX 202	Adjunct Instructor of Chemistry/Physical Science
Johnson, Haley	2247	johnsonh@nacc.edu	BE 109-C	Director, Division of Business and Computer Science/ Economics Instructor
Johnson, Rhonda		johnsonr@nacc.edu	MT 216	Adjunct Instructor of Biology
Jones, Kent	2244	jonesk@nacc.edu	SC 100	Director of Physical Plant
Kennamer, Dr. Michael	2291	kennamer@nacc.edu	PA 150	Dean of Workforce Development and Skills Training
Kilgore, Barbara	2303	kilgoreb@nacc.edu	GY 229	Art Instructor
Kirk, Darrell	2312	kirkd@nacc.edu	GY 205	Golf Coach
Kirk, Donna	2337	dkirk@nacc.edu	EN 120	Writing Lab Manager/Tutor/Retention Specialist
Kisor, Ronny	2265	rkisor@atn.org	WD 126	ATN Director
Kleve, Tim	2613	klevet@nacc.edu	MT 229	Adjunct Instructor of Mathematics
LaCount, Amy	2269	lacounta@nacc.edu	BE 104	Office Administration Instructor
Land, Rodney	2270	landr@nacc.edu	MT 223	Instructor of Chemistry/Director, Division of Natural Sciences
Lasser, Rhonda		lasserr@nacc.edu	EN 116	Adjunct Instructor of English
Lea, Judith	2309	leaj@nacc.edu	BE 107	Director of Technology Learning Center
Ledbetter, Beverly A.		ledbetterb@nacc.edu		Adjunct Instructor of Mathematics
Lee, Ashley		leea@nacc.edu	WA 106	Adjunct Instructor of Biology
Lester, Dennis	2409	lesterd@nacc.edu	TC 101	ILT/INT Instructor
Mann, Lynde	2230	mannl@nacc.edu	PA 116	Human Resources Director
Markham, Sara	2215	markhams@nacc.edu	GY 243	Music Instructor
Martin, Trish		martint@nacc.edu	MT 215	Adjunct Instructor of Biology
Massey, Jay	2310	masseyj@nacc.edu	PA 136	Computer Science Instructor
McBride, Keith	2319	mcbridek@nacc.edu	BE 109-B	Business Instructor
McClain, Tresha	2271	mcclaint@nacc.edu	LI 202	Spanish Instructor
McClung, Regan	2218	mcclungr@nacc.edu	LY 208	Theatre Office Manager/Theatre Outreach Coordinator
McCurdy, Gloria		mccurdyg@nacc.edu		Custodial/Maintenance Employee
McFadden, Pat R.		mcfaddenp@nacc.edu		Adjunct Instructor of Religion
McFall, Scott		mcfalls@nacc.edu		Adjunct Instructor of Mathematics
McKinnon, M.M.		mckinnonm@nacc.edu	WD 246	Adjunct Instructor of Psychology
Megehee, Leasha	2613	megeheel@nacc.edu	MT 229	Adjunct Instructor of Mathematics
Metz, Lashawna		metzl@nacc.edu		Adjunct Instructor of Mathematics
Miller, Bryon	2360	millerb@nacc.edu	WA 112	Career and Transfer Advisor
Miller, Katelin	2266	millerk@nacc.edu	PA 129	Administrative Systems Manager/Assistant Registrar
Miller, Staci R.	2225	millers@nacc.edu	SC 115B	Administrative Assistant to the Dean of Student Services
Mitchell, Kenneth		mitchellk@nacc.edu		Adjunct Instructor of Computer Science
Mitchell, Michael	2237	mitchellm@nacc.edu	SS 110	Adjunct Instructor of Philosophy
Monroe, Jeff		monroej@nacc.edu	MT 226	Adjunct Instructor of Mathematics
Moore, Donna	2335	moored@nacc.edu	WD 249	Medical Assisting Technology Instructor
Moore, Scarlett				Custodial/Maintenance Employee
Morris, Jon Stacy	2307	morriss@nacc.edu	GY 240	Music Instructor/Director of Instrumental Ensembles
Nappier, Jonathon W.	2362	nappierj@nacc.edu	GY 227	GED Chief Examiner and College/Adult Education Liaison
Niblett, Adam C.	2389	nibletta@nacc.edu	MT 225	Instructor of Mathematics/Division Director
Niblett, Tonie		niblettt@nacc.edu		Adjunct Math Instructor
Okwu, Andrea	2258	okwua@nacc.edu	PA 205	Coordinator of High School Relations/Recruiting
Orr, Lee		orrl@nacc.edu		Adjunct Instructor of Mathematics



## FACULTY & STAFF DIRECTORY

Instructor	Phone	E-mail	Office	Title
Ott, Eric		otte@nacc.edu		Adjunct Instructor of Welding
Overdear, Leisha		overdearl@nacc.edu		Adjunct Instructor of Child Development
Parham, Nathan		parhamn@nacc.edu	KX 107	Adjunct Instructor of Biology
Parker, Shane		parkers@nacc.edu	HE 122	Adjunct Instructor of EMS
Patterson, Denise	2233	pattersond@nacc.edu	MT 217	Biology Instructor
Patterson, Reda	2328	pattersonr@nacc.edu	LI 104	Learning Resources Secretary
Peek, Chris	2702	peekc@nacc.edu	CDL	CDL Trucking Driving Instructor
Pendergrass, Gregg		pendergrassg@nacc.edu	MT 229	Adjunct Instructor of Mathematics
Phillips, Crystal		phillipsc@nacc.edu		Adjunct Instructor of Mathematics
Phillips, Traci	2273	phillipst@nacc.edu	SS 118	Speech Instructor
Pope, Jon-Alan		popej@nacc.edu		Adjunct Instructor of Mathematics
Prater, Debbie	2261	praterd@nacc.edu	WA 122	Payroll Clerk
Privett, Neal		privettn@nacc.edu		Adjunct Instructor of English
Quizon, Sheena		quizons@nacc.edu	KX 205	Adjunct Instructor of Nutrition
Ragsdale, Jody	2280	ragsdalej@nacc.edu	EN 109	Instructor of English
Reece, Wanda				Custodial/Maintenance Employee
Reed, Everett	2349	reede@nacc.edu	EN 121	English Instructor
Reeves, Joan	2231	reevesj@nacc.edu	EN 107	Instructor of English/Director, Division of English and Fine Arts/Director of Student Activities
Reeves, Rebecca		reevesr@nacc.edu	HE 119	Adjunct Instructor of Medical Assisting Technology
Reyes, Leslie	2222	reyesl@nacc.edu	SC 115	Admissions Office Assistant
Rice, Heather	2301	riceh@nacc.edu	PA 145	Development Director
Roberts, Roberta		robertsr@nacc.edu	GY 221	Adult Basic Education ESL Resource Instructor
Robertson, Kyle		robertsonk@nacc.edu		Adjunct Instructor of EMS
Robinson, Tina		robinsont@nacc.edu	HE 119	Adjunct Instructor of Medical Assisting Technology
Ryan, Tracy		ryant@nacc.edu	MT 216	Adjunct Instructor of Biology
Saint, Dawn	2297	saintd@nacc.edu	GY 223	Adult Basic Education Regional ESL/Bilingual Resource Instructor
Saint, Robert		saintr@nacc.edu	MT 215	Adjunct Instructor of Biology
Sanford, Julia	2257	sanfordj@nacc.edu	SC 113	Director of Developmental Studies Support Programs and College Retention
Shankles, Amy	2326	shanklesamy@nacc.edu	LI	Library Resources Cataloger
Shelton, Kristen	2322	sheltonk@nacc.edu	SC 115	Admissions Office Assistant and Student Services Secretary
Shelton, Robyn		sheltonr@nacc.edu		Adjunct Instructor of Biology
Shugart, Anna		shugarta@nacc.edu		Adjunct Instructor of English
Simpson, Steve		simpsons@nacc.edu		Adjunct Instructor of Mathematics
Smith, Gary		smithg@nacc.edu		Adjunct Instructor of Mathematics
Smith, Jennifer		smithj@nacc.edu	EN 112	Adjunct Instructor of English
Smith, Norman	2249	smithn@nacc.edu	SC 101	Police Chief
Smith, Valorie		smithv@nacc.edu		Adjunct Instructor of English
Stewart, Angela	2240	stewarta@nacc.edu	PA 121	Administrative Assistant to Vice President/ Dean of Instruction
Stivers, Nia		stiversn@nacc.edu		Adjunct Instructor of English
Strickland, Beth		stricklandb@nacc.edu		Adjunct Instructor of Mathematics
Stringer, Brenda	2243	stringerb@nacc.edu	PA 103	Executive Assistant to the President
Suggs, Wade		suggsw@nacc.edu	KX 107	Adjunct Instructor of Biology
Swinford, Joey		swinfordj@nacc.edu		Adjunct Instructor of Mathematics
Totten, Dr. Sharon	2245	tottens@nacc.edu	WA 100	Director of Advising
Traylor, Kim		traylork@nacc.edu		Adjunct Instructor of Mathematics
Troy, Charity		troyc@nacc.edu		Adjunct Instructor of Art

**FACULTY & STAFF DIRECTORY**

<b>Instructor</b>	<b>Phone</b>	<b>E-mail</b>	<b>Office</b>	<b>Title</b>
Tucker, Joan	2252	tuckerj@nacc.edu	EN 108	English Instructor
Turner, Tim		turnert@nacc.edu		Adjunct Instructor of Drafting and Design Technology
Vaughn, Paige	2268	vaughnp@nacc.edu	PA 217	Assistant to the Coordinator of High School Relations and Recruiting
Wade, Cindy		wadec@nacc.edu		Adjunct Instructor of Mathematics
Walker, Rachel	2255	walkerr@nacc.edu	HE 119	Adjunct Instructor of Medical Assisting Technology
Ware, Rhonda		warer@nacc.edu	HE 246	Adjunct Instructor of Psychology
Webb, Mark A.	2318	webbm@nacc.edu	LY 208	Director of Theatre/Theatre Instructor
Wells, Kathy		wellsk@nacc.edu	GY 103	Adjunct Instructor of Physical Education
White, Lori	2329	whitel@nacc.edu	LI 105	Librarian
White, Tim		whitet@nacc.edu		Adjunct Instructor of Carpentry
Whitmire, Heather		whitmire@nacc.edu		Adjunct Instructor of History
Whitten, Sherry	2315	whittens@nacc.edu	WA 112	Director of College and Career Planning Center
Wigley, Barry	2812	wigleyb@nacc.edu	IS 102	Industrial Electronics Instructor
Wildman, Pat	2207	wildmanp@nacc.edu	SC 103	Office Assistant (Reverse Transfer)
Wilhelm, Blake	2288	wilhelmb@nacc.edu	LI 205	Adjunct Instructor of History and LRC Archivist/Specialist
Williamson, Ashley		williamsona@nacc.edu		Adjunct Instructor of English
Williamson, Kip	2253	williamsonk@nacc.edu	GY 219	Adult Education Program Director
Williamson, Dr. Myrna	2299	williamsonm@nacc.edu	HE 221	Division Director Health Sciences/Director of Nursing Education
Willmon, Nicky	2203	willmonn@nacc.edu	WA 101-A	Director of Financial Aid
Woodall, Robert	2236	woodallr@nacc.edu	SS 123	Psychology Instructor/ Director, Division of Social Science, Speech, and Foreign Languages
Wootten, Roger	2311	woottenr@nacc.edu	WD 246	EMS Instructor
Wright, Loretta		wrightl@nacc.edu	SS 106	Adjunct Instructor of History
York, Rhonda				Custodial/Maintenance Employee
Zanzig, Julie		zanzigj@nacc.edu	MT 216	Adjunct Instructor of Chemistry/Physical Science

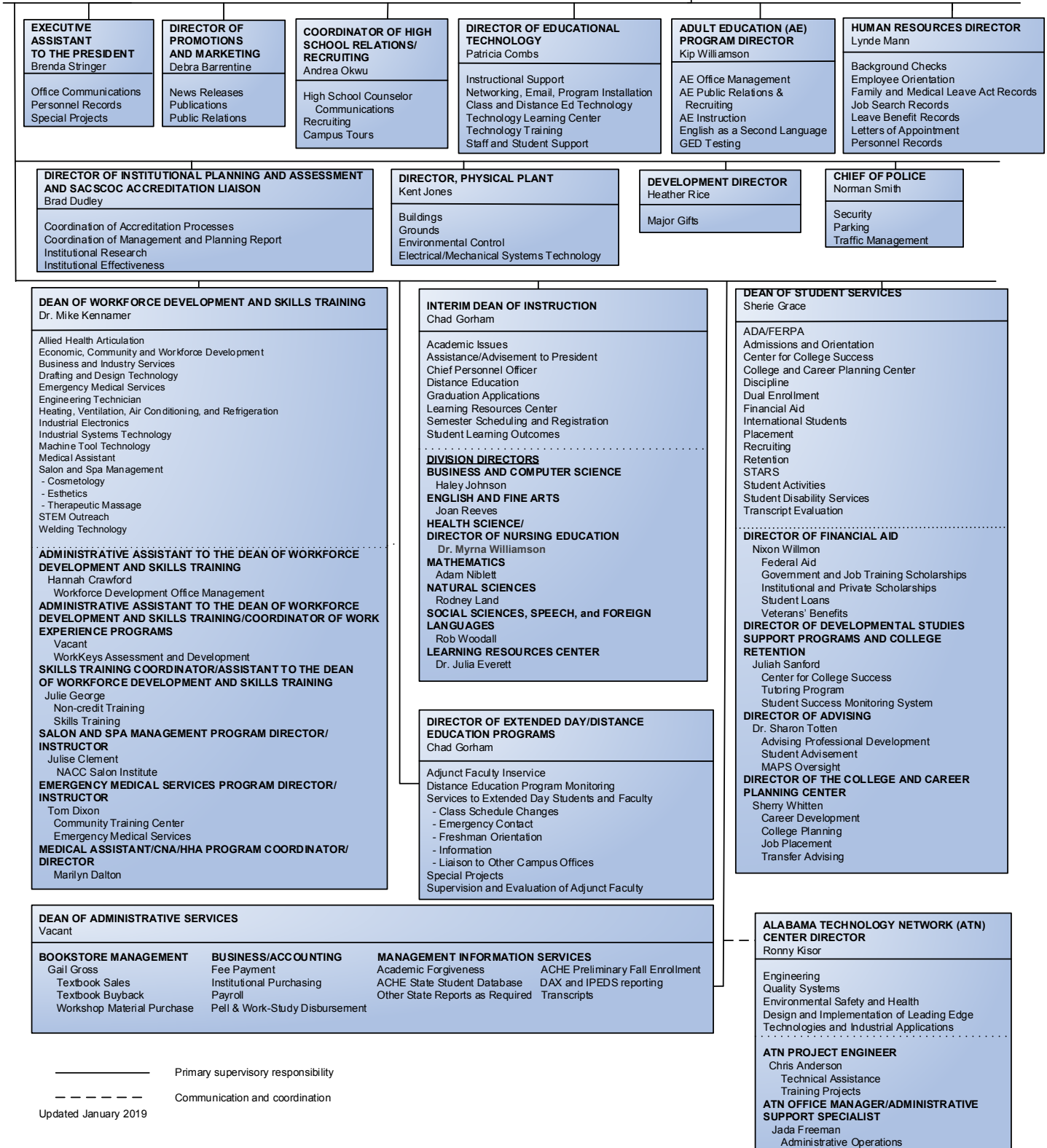
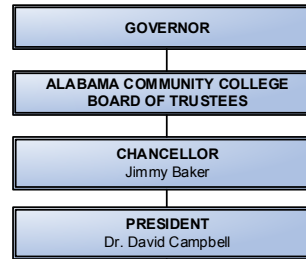


**WHERE TO GO FOR ASSISTANCE**

<b>CONCERNING</b>	<b>OFFICE</b>	<b>LOCATION</b>
Absences – Instructor	Instructor	Instructor's Office
Academic Advisement	Advisor	Advisor's Office
Adding a Class	Advisor	Advisor's Office
Admissions/Readmissions	Admissions Office	Student Center 115
Alumni Services	Chasley Bellomy	Pendley Admin. Building 201
Apply for a Certificate	Advisor	Advisor's Office
Auditing a Course	Advisor	Advisor's Office
Books and Supplies	Bookstore	Annex 100
Campus Tours	Andrea Okwu/Paige Vaughn	Pendley Admin. Building 205
Career Advising	Sherry Whitten	Wallace Admin. Building 112
Change of Address	MIS/Registrar	Pendley Admin.
Change in Schedule	Advisor	Advisor's Office
Chorus/Voice Scholarships	Sara Markham	GY 243
Club Meetings	Sponsor	Sponsor's Office
Distance Education	Chad Gorham	PA 111
Drama Program	Mark Webb, Director	Bevill Lyceum/Theatre
Drama Scholarships	Mark Webb, Director	Bevill Lyceum/Theatre
Dropping a Class	Advisor	Advisor's Office
Email	Technology Support	Pendley Admin. Building
Fees	Business Office	Wallace Admin. Building
Final Examinations	Instructor	Instructor's Office
Financial Aid	Financial Aid Office	Wallace Admin. Building
Fines	Business Office	Wallace Admin. Building
Forming a Club	Dean of Student Services	Student Center
Grades	Registrar	Pendley Admin. Building
Graduation	Vice President/Dean of Instruction	Pendley Admin. Building
Grievance Procedure	Dean of Student Services	Student Center
Harassment	Human Resources/Title IX Coordinator	Pendley Admin. Building
ID Cards	Admissions Office	Student Center
Insurance Certifications (Student)	Registrar	Pendley Admin. Building
Job Placement	College and Career Planning Center	Wallace Admin. Building 112
Lost and Found	Campus Police	Student Center
Non-Credit Training	Skills Training Office	PA 118
Online Classes	Chad Gorham	PA 111
Orientation	Director of Advising	Wallace Admin. Building 100
Parking Permits	Admissions Office	Student Center
Probation (Academic)	Dean of Student Services	Student Center
Refunds	Business Office	Wallace Admin. Building
Registration	Advisor	Advisor's Office
Reserving School Facilities	Vice President/Dean of Instruction	Pendley Admin. Building
Safety or Security Concerns	Campus Police	Student Center
Schedule of Classes	Vice President/Dean of Instruction	Pendley Admin. Building
Social Functions	Dean of Student Services	Student Center
Student Government	SGA Sponsor	English Building
Suspension	Dean of Student Services	Student Center
Technology Support	Technology Support	Pendley Admin. Building
Testing (CAAP)	Director of Institutional Planning and Assessment	Wallace Admin. Building
Testing (ACCUPLACER)	Admissions Office	Student Center
Testing (GED)	Jonathon Nappier	GY Building 227
Testing (WorkKeys)	Nancy Griggs	WD 259
Theatre Tickets	Theatre Office Manager	Bevill Lyceum/Theatre
Transcripts	Registrar (MIS) Window	Pendley Admin. Building
Transfer Credit Problems	Admissions Office	Student Center
Transferability of Courses	Bryon Miller	Wallace Admin. Building 112
Tutoring Services	Juliah Sanford	Student Center 113
Used Books	Bookstore	Annex 100
Veterans' Services	VA Office/Financial Aid Office	Wallace Admin. Building
Visitors to Campus	Campus Police	Student Center
Visual Arts Scholarships	Barbara Kilgore	GY 229
Withdrawal from School	Advisor	Advisor's Office
Work Study	Financial Aid Office	Wallace Admin. Building

# ORGANIZATIONAL CHART

## ORGANIZATIONAL CHART NORTHEAST ALABAMA COMMUNITY COLLEGE Chart 1: Summary of Services 2019-2020



———— Primary supervisory responsibility  
 - - - - - Communication and coordination  
 Updated January 2019



This handbook describes student rights and responsibilities. The following specific issues are addressed alphabetically.

## CAMPUS REGULATIONS AND SERVICES

### ABSENCE POLICY

Specific policies governing class attendance are established by individual faculty members. Instructors will discuss their attendance policy with each class at the beginning of the semester. It is the responsibility of students to know the attendance policy for each course in which they are enrolled.

### ACADEMIC PROGRESS STANDARDS

These standards of progress shall apply to all students unless otherwise noted.

#### 1. Exceptions

Programs within the institution which are subject to external licensure, certification, and/or accreditation or which are fewer than four semesters in length may have higher standards of progress than the institutional standards of progress.

A transfer student whose cumulative grade point average at the transfer institution(s) is less than 2.0 on a 4.0 scale will be admitted on Academic Probation upon admission and must transition to these standards of academic progress.

Special standards of academic progress have been established for students enrolled in institutional credit courses carrying optional grades and for students who wish to remain eligible to receive Title IV financial aid.

#### 2. Required GPA Levels for Students According to Number of Hours Attempted at the Institution

Students who have attempted 12-21 semester credit hours at the institution must maintain a 1.5 Cumulative Grade Point Average.

Students who have attempted 22-32 semester credit hours at the institution must maintain a 1.75 Cumulative Grade Point Average.

Students who have attempted 33 or more semester credit hours at the institution must maintain a 2.0 Cumulative Grade Point Average.

#### 3. Intervention for Student Success

When a student is placed on Academic Probation, One Term Academic Suspension, or One Calendar Year Academic Suspension, college officials may provide intervention for the student by taking steps including but not limited to, imposing maximum course loads, requiring a study skills course, and/or prescribing other specific courses.

#### 4. Application of Standards of Progress

When the Cumulative GPA is at or above the GPA required for the total number of credit hours attempted at the institution, the student's status is Clear.

When the student's Cumulative GPA is below the GPA required for the number of credit hours attempted at the institution, the student is placed on Academic Probation.

When the Cumulative GPA of a student who is on Academic Probation remains below the GPA required for the total number of credit hours attempted at the institution but the semester GPA is 2.0 or above, the student remains on Academic Probation.

When the Cumulative GPA of a student who is on Academic Probation remains below the GPA required for the total number of credit hours attempted at the institution and the semester GPA is below 2.0, the student is suspended for one semester. The transcript will read SUSPENDED—ONE SEMESTER.

The student who is suspended for one semester may appeal. If, after appeal, the student is readmitted without serving the one semester suspension, the transcript will read SUSPENDED—ONE SEMESTER/READMITTED UPON APPEAL.

The student who is readmitted upon appeal re-enters the institution on Academic Probation. A student who is on Academic Probation after being suspended for one semester (whether the student has served the suspension or has been readmitted upon appeal) without having since achieved Clear academic status and whose Cumulative GPA falls below the level required for the total number of hours attempted at the institution but whose semester GPA is 2.0 or above will remain on Academic Probation until the student achieves the required GPA for the total number of hours attempted.

A student returning from a one term or one year suspension and, while on academic probation, fails to obtain the required GPA for the number of hours attempted and fails to maintain a term GPA of 2.0, will be placed on a one year suspension.

The student may appeal a one term or one year suspension.

The permanent student record will reflect the student's status (except when the status is clear). When appropriate, the record will reflect ACADEMIC PROBATION, ACADEMIC SUSPENSION—ONE TERM, ACADEMIC PROBATION—ONE YEAR, ONE TERM SUSPENSION—READMITTED ON APPEAL, OR ONE YEAR SUSPENSION—READMITTED ON APPEAL.

If a student declares no contest of the facts leading to suspension but simply wishes to request consideration for readmission, the student may submit a request in writing for an "appeal for readmission" to the Admissions Committee.

During the meeting of the Admissions Committee, which shall not be considered a "due process" hearing but rather a petition for readmission, the student shall be given an opportunity to present a rationale and/or statement of mitigating circumstances in support of immediate readmission. The decision of the Admissions Committee, together with the materials presented by the student, shall be placed in the college's official records. Additionally, a copy of the written decision shall be provided to the student. Equity, reasonableness, and consistency should be the standards by which such decisions are measured.

#### 5. Initial Academic Status of Transfer Students

A transfer student whose cumulative grade point average at the transfer institution(s) is 2.0 or above on a 4.0 scale will be admitted on CLEAR academic status.

A transfer student whose cumulative grade point average at the transfer institution(s) is less than 2.0 on a 4.0 scale will be admitted only on Academic Probation. The transcript will read ADMITTED ON ACADEMIC PROBATION.

An applicant who has been academically suspended from another regionally or Council on Occupational Education accredited postsecondary institution may be admitted as a transfer student only after following the appeal process established at the college for "native" students who have been academically suspended. If the transfer student is admitted upon appeal, the student will enter the institution on Academic Probation. The transcript will read ADMITTED UPON APPEAL—ACADEMIC PROBATION.

#### 6. Definition of Terms

Grade Point Average (GPA) – The grade point average based on all hours attempted during any one term at the institution based on a 4 point scale.

Cumulative Grade Point Average (GPA) – The grade point average based on all hours attempted at the institution based on a 4 point scale.

Clear Academic Status – The status of a student whose Cumulative Grade Point Average (GPA) is at or above the level required by this policy for the number of credit hours attempted at the institution.

Academic Probation

- (1) The status of a student whose Cumulative GPA falls below the level required by this policy for the total number of credit hours attempted at the institution; or
- (2) The status of a student who was on Academic Probation the previous term and whose Cumulative GPA for that semester remained below the level required by this policy for the total number of credit hours attempted at the institution but whose Semester GPA for that term was 2.0 or above.

One Semester Academic Suspension – The status of a student who was on Academic Probation the previous term but who has never been suspended or who, since suspension, had achieved Clear Academic Status and whose Cumulative GPA that term was below the level required by this policy for the total number of credit hours attempted at the institution and whose Semester GPA for that term was below 2.0.

One Year Academic Suspension – The status of a student who was on Academic Probation the previous term and who had been previously suspended without since having achieved Clear Academic Status and whose Cumulative GPA that term remained below the level required by this policy for the total number of credit hours attempted at the institution and whose Semester GPA for that term was below 2.0.

Appeal of Suspension – The process by which an institution shall allow a student suspended for one term or one year (whether a “native” student or a transfer student) to request readmission without having to serve the suspension.

## ACCELERATED HIGH SCHOOL PROGRAM

The Accelerated High School program is an enrichment opportunity allowing eligible high school students to earn college credits for courses taken at NACC while still enrolled in high school. High school students will not receive high school credit for any college courses completed in the Accelerated High School program. The Accelerated High School program is available to students attending public, private, parochial or church/religious schools pursuant to §16-28-1 of the Code of Alabama 1975, or who are receiving instruction from a home school/private tutor pursuant to §16-28-5 of the Code of Alabama 1975. Students in the Accelerated High School program are responsible for the cost of tuition, fees, textbooks, materials and supplies as required in the syllabus of each course.

Students may only enroll in postsecondary courses for which the high school prerequisites for the courses in which he/she enrolls have been completed. Students may enroll in academic, career and technical, or health profession courses/programs.

Upon completion of the Accelerated High School program and high school graduation, the student must apply for admissions and meet all NACC admissions requirements.

## ACCOMMODATIONS FOR DISABILITIES

Students or guests who have a disability which may prevent them from enjoying the services or activities of the college may request accommodations to enable their participation. Requests may be directed to instructors, to any person in charge of an activity, or to any receptionist or other staff member who is in a position to assist. The college is committed to providing reasonable accommodations in accordance with the Americans with Disabilities Act of 1990, Section 504 of the Rehabilitation Act of 1973, and all other applicable

regulations. Special needs or requests for assistance beyond what can be readily provided by the point-of-contact personnel listed above should be directed to Leslie Reyes, the ADA Compliance Coordinator, Office 115 in the Student Center at 138 Alabama Hwy 35, Rainsville, AL 35986 or 256-638-4418, ext. 2222.

## ACCUPLACER

The ACCUPLACER placement test is administered by the Office of Admissions and Student Services. The test consists of two sections and assesses a student’s achievement level in writing and mathematics. ACCUPLACER is not a timed test and is administered via computer. This assessment tool helps determine the level of preparedness for college-level work and plan the best set of courses for individual career goals and skill levels. A student may retest for a \$10.00 fee per subject area provided there is evidence the student has completed sufficient test preparation activities. Students scheduled to take the ACCUPLACER must present a valid state-issued identification and may not bring any personal belongings in the computer lab; including cell phones, calculators, bags, smart watch, etc.

Exemptions: Students who have previous college credit in college-level English and mathematics with a grade of “C” or better and students who have an associate degree or higher are not required to take the test. Also, any student scoring at or above the established ACT or SAT scores as detailed on the website at nacc.edu for either English or mathematics within five years of enrollment is exempt from the subject-specific placement assessment. Students who have the appropriate high school GPA and grade markers from public Alabama high schools may also be exempt from subject specific assessment.

## ADA COMPLAINT PROCESS

Northeast Alabama Community College has adopted an internal complaint process providing for prompt and equitable resolution of complaints alleging any action prohibited by the U.S. Department of Justice regulations implementing Titles I and II of the Americans with Disabilities Act. Title I, Section 102(a) states that “No covered entity shall discriminate against a qualified individual with a disability because of the disability of such individual in regard to job application procedures, the hiring, advancement, or discharge of employees, employee compensation, job training, and other terms, conditions, and privileges of employment. Title II, states, in part, that “No otherwise qualified disabled individual shall, solely by reason of such disability, be excluded from the participation in, be denied the benefits of, or be subjected to discrimination” in programs or activities sponsored by a public entity.

1. As a first step, the party making a complaint should meet with the party with whom he/she is in disagreement, and attempt to discuss and clarify the problem.
2. If the problem cannot be resolved in step one, the next step is for the complainant to discuss the complaint with the ADA Compliance Coordinator. If the complaint is lodged against the ADA Compliance Coordinator, the complainant will meet with the ADA Compliance Coordinator’s immediate supervisor.
3. If the ADA Compliance Coordinator is unable to resolve the issue informally, the complainant can file a formal complaint in writing. The written complaint must contain the name and address of the person filing the complaint, and it must briefly describe the alleged violation of the regulation. The complaint must be submitted to the ADA Compliance Coordinator within ten (10) business days of the alleged violation.
4. The ADA Compliance Coordinator will investigate the complaint. The investigation shall be an informal but thorough investigation,

affording all interested parties and their representatives, if any, an opportunity to submit evidence relevant to the complaint.

5. A written determination as to the validity of the complaint and a description of the resolution, if any, shall be issued by the ADA Compliance Coordinator to the complainant no later than fifteen (15) business days after the complaint is filed. The report shall be delivered in person or to the address given in the written complaint, by certified mail, return receipt requested.
6. If the complainant is not satisfied with the decision of the ADA Compliance Coordinator, he or she may file a written appeal with the President specifically stating the objections to the decision within ten (10) business days after receipt of the decision. The President will appoint a committee of at least three persons to review the complaint. The Committee will review the decision of the ADA Compliance Coordinator solely on the following grounds, and none other:
  - a. to determine if there was substantial evidence to support the decision;
  - b. to determine if the student had a fair and impartial investigation regarding their case; and
  - c. to determine if there is new evidence which would affect the decision.
7. The committee will submit a recommendation to the President, within thirty (30) days of the filing of request for reconsideration.
8. The President will review the committee report and will file a written response to the Complainant and the ADA Compliance Coordinator. The decision of the president shall be final under the provision of this complaint process.
9. If, after exhausting all available institutional processes, a student's complaint remains unresolved, the student may appeal to the Alabama Community College System using the official [Student Complaint Form](#), which is also available at the ACCS website ([www.accs.edu](http://www.accs.edu)). Students may submit completed complaint forms by printing the form, signing it, and then either (1) scanning it and emailing it to [complaints@accs.accs.edu](mailto:complaints@accs.accs.edu) (2) mailing it to:  
Alabama Community College System  
Attention: Office of the Vice Chancellor  
for Instructional and Student Services  
P.O. Box 302130  
Montgomery, AL 36130-2130  
The Division of Academic and Student Affairs will investigate the complaint within 30 days of receipt.
10. The institution has 30 days to provide a written response to questions and/or concerns raised during the Division of Academic and Student Affairs investigation. Such response may or may not contain a resolution. The Division of Academic and Student Affairs will judge the matter and write a report or letter to the institution and student detailing corrective action, if any is necessary, or stating that the school has no violation of policies. If corrective action is needed the institution will have 30 days to comply or develop a plan to comply with the corrective action. The System Office will monitor the institution's compliance to ensure the completion of any required corrective action.

Notes: Any time limit set herein may be extended upon the written mutual consent of both parties. A copy of the complaint and resolution of the complaint will be kept on file with the ADA Compliance Coordinator for a minimum of five years. During resolution proceedings, the College shall use a preponderance of evidence to determine if a violation of policy has been made. The preponderance of evidence will consist of such evidence as, when considered and compared with that opposed to it, has more convincing force and produces in the mind's belief that what is sought to be proved is more likely true than not true.

Students requiring reasonable accommodations during the complaint process should contact the ADA Compliance Coordinator.

Students should allow reasonable advanced notice so that reasonable accommodations may be arranged.

All complaints related to disabilities should be addressed to:  
Leslie Reyes  
ADA Compliance Coordinator  
Phone: (256) 638-4418, Ext.2222  
Email: [reyesl@nacc.edu](mailto:reyesl@nacc.edu)

## ADMISSIONS

Admissions requirements are outlined in the Admissions Requirements section of this catalog.

Admissions information and pertinent forms may be obtained in the Admissions Office in the Student Center, on the college website at [www.nacc.edu](http://www.nacc.edu)., and on the NACC App.

## ACADEMIC ADVISING

NACC is committed to a multilevel advising system to develop self-regulated learners by which academic advisors build relationships of trust and guidance that empower students to achieve their personal, academic, and career goals. We believe that students who are actively engaged in their education will be more successful throughout their educational careers and beyond. The NACC advising process is called MAPS: Mentoring, Advising, and Preparing for Success.

Each student, upon enrollment, will attend a new student orientation and be assigned an academic advisor who is familiar with the college program specific to the area of interest of the student.

## ADULT EDUCATION

Adult Education operates under the Alabama Community College System and through a consortium of public school systems and community colleges in DeKalb, Jackson, and Marshall Counties. **The Program** provides academic instruction from very basic skills up to the college level. Areas of instruction include reading, writing, and speaking English, math, social studies, science, GED, **ACT prep**, college preparation, and **assisting with career pathways**.

Instruction is grouped into two general areas: Basic Academic Improvement (including GED, adult reading, and college prep), and English as a Second Language (ESL). Classes are usually scheduled separately and are free and open to anyone 17 years of age or older and not enrolled in a K-12 school. Instructional materials are provided to enrollees, and many classes are equipped with computers using the latest software **and online programs**. In some cases, the Program partners with area industries to provide classes for their employees. Whether held on-site or in public locations, participants have the opportunity to improve work-specific skills in addition to general academic improvement. Please contact us if you wish to enroll or perhaps volunteer your time to help others. For more specific information or class locations and times, please contact our office at 256-638-2957 or 256-228-0021, visit our website at [www.nacc.edu/adulted](http://www.nacc.edu/adulted) or email us at [williamsonkip@nacc.edu](mailto:williamsonkip@nacc.edu).

### Adult Education Learning Lab

The Adult Education Learning Lab, located in Room 227 of the Beck Health & Fine Arts Building, is a Pearson VUE Authorized Testing Center for Northeast Alabama Community College and the surrounding areas. The lab was developed to offer the new computer based GED Exam, and has grown to include various certification and licensing testing for many other fields to meet the needs of local students and professionals, as well as businesses and industries. Certifications through CompTIA, C++, and Adobe, are among the items offered in the information Technology field. The National Registry of Emergency Medical Technicians (NREMT) exams are part of the growing



healthcare fields represented. Business and education profession exams are also available. For more information, contact Jonathon Nappier at (256) 638-4418 \*2362 or nappierj@nacc.edu. To register for exams, please visit [www.pearsonvue.com](http://www.pearsonvue.com).

### APP–NACC MOBILE

Northeast Alabama Community College Mobile App is available for free download from the Apple App Store and Google Play Store. Recently upgraded, this App has many modern design features, including the new Voice Search Tool that can provide information on most questions pertaining to the college. Simply hold down the Voice Search icon in the App’s navigation menu while speaking, and results will instantly appear. Another new feature is the mustang animation added to the college’s logo. The App is a great resource for faculty and staff, but also for current and prospective students to calculate tuition, browse class schedules, or even complete an application with it. The App also includes easily accessible crisis management directions for any emergency situations on campus.

To access this App, go to the Apple App Store for the iOS version or go to the Google Play Store for the Android version. If you have the older version of the NACC App, you will want to uninstall that version and then reinstall the new one. Future updates are automatic with the new App.

For information about the App, contact Debra Barrentine, NACC Director of Promotions and Marketing, at ext. 2210 or [barrentined@nacc.edu](mailto:barrentined@nacc.edu).

### ALCOHOLIC BEVERAGES

Northeast does not permit the consumption or possession of alcoholic beverages on the campus or at college-sponsored functions.

### ARTICULATION/TRANSFER

#### STARS:

The Alabama Articulation Program (also called STARS—Statewide Articulation Reporting System) is an articulation and transfer planning system designed to inform students who attend Alabama Community Colleges about degree requirements, course equivalents, and other transfer information pertaining to specific majors at each state funded four-year institution. STARS is an efficient and effective way of providing students, counselors, and educators with accurate information upon which transfer decisions can be made. STARS is the information link between the state’s public two-year and four-year institutions. The STARS database, if used properly, can prevent the loss of course credit hours, can provide direction for the scheduling of course work, and can ease the transition from one institution to another. It is the student’s responsibility to stay informed about STARS and the university’s requirements regarding individual programs of study. Students must print the STARS guide, follow the instructions and retain the printed copy as documentation for the public universities in Alabama. For more information, go to <http://stars.troy.edu>.

#### 2TO4 TRANSFER PROGRAM:

2to4 Transfer Program assists transfer students with determining what courses will transfer to a private college or university in Alabama. Students can obtain a 2to4 Transfer Guide for the university and major of their choice by visiting <https://www.accs.cc/index.cfm/academics/private-college-transfer-guides/>. It is the student’s responsibility to stay informed about 2to4 and the university’s requirements regarding individual programs of study.

As of 2015, the following members of Alabama’s Independent Colleges and Universities (AAICU) participate in the 2to4 Program:

Birmingham-Southern College	Samford University
Concordia College	Spring Hill College
Faulkner University	Stillman College
Huntingdon College	Talladega College
Judson College	United States Sports Academy
Miles College	University of Mobile

More colleges are being added as Transfer Guides are completed.

### BOOKSTORE (TEXTBOOKS, ETC.)

The college bookstore is Textbooks, Etc. and is located in the Annex. Textbooks, workbooks, lab books, supplies for art, nursing, and music, and general supplies such as paper, pens, pencils, index cards, headache/cold remedies, NACC t-shirts and caps, and other items are offered for sale. Students can pay by cash, check, credit card, or debit card.

The goal of Textbooks, Etc. is to have the textbooks and related materials in the store at the beginning of the semester and to keep the cost of all items as low as possible.

**Buyback Policy:** Hardcover and paperback books will be bought back at 50% of purchase price. The book must be in good condition for use by the owner, and it must be in use the upcoming semester.

Textbooks that will not be used on campus will have a buyback price established by the Market Buyer’s Guide. These buybacks will be determined by the bookstore having an opportunity to market these books.

**Refunds:** With a receipt, textbooks may be returned/exchanged for full credit within the first 7 class days of each semester if a class has been changed or dropped. The books must not be marked, shrink-wrap must not be removed and disk or CD must be unopened in book. REFUNDS WILL NOT BE GIVEN UNTIL THE SECOND DAY OF CLASS OF THE SEMESTER.

Hours for Textbooks, Etc.:

Monday and Thursday – 8:00 AM - 5:00 PM  
 Tuesday and Wednesday – 8:00 AM - 2:00 PM  
 Friday – 8:00 AM - 12:00 Noon

Telephone:

256-638-4418, Ext. 2287  
 FAX: 256-638-9476

### CAFETERIA/FOOD SERVICES

A privately operated Cafeteria is located in the Student Center. Students should return trays and dishes to the designated window and help to keep the building clean. Glasses, dishes, utensils, etc., should not be removed from the Student Center. Students should conduct themselves with proper manners at all times.

### CAMPUS SAVE ACT AND THE CLERY ACT

The Campus Sexual Violence Elimination Act (SaVE Act) was passed in March 2013 as a part of the Violence Against Women Reauthorization Act (VAWA).

The goals of the Campus SaVE Act are to:

- Prevent domestic violence, sexual assault, dating violence and stalking on campus.
- Educate the campus community that violence against women is unlawful.
- Coordinate services to recipients and survivors in response to incidents.
- Give students and staff information on campus security policies and statistics.